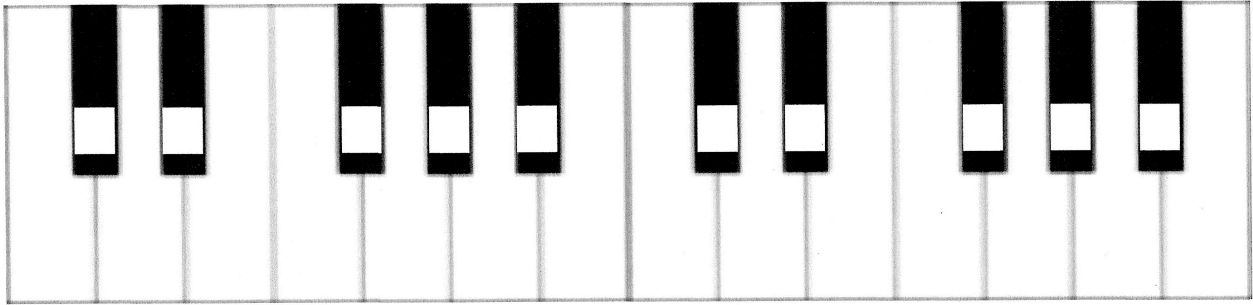
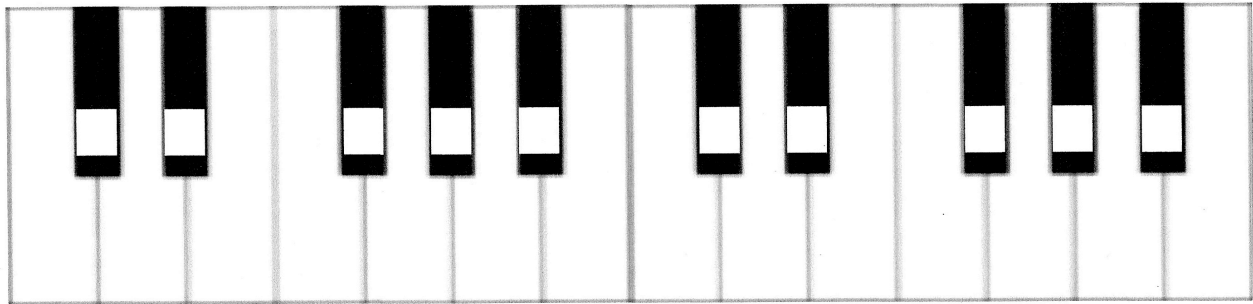


One Octave Harmonic Minor Scale: Key _____

Draw your natural minor scale using solfège.



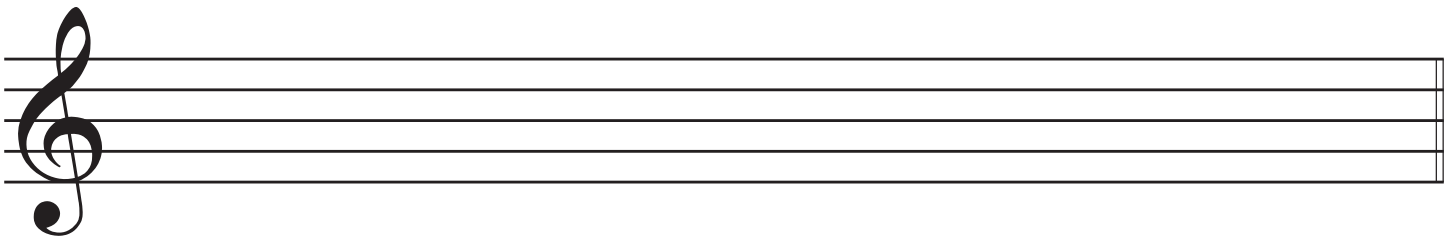
To make a harmonic minor scale, only one note changes from natural minor. TE moves back up 1/2 step to Ti. Draw the new scale below.



Write in the new scale letter names in the boxes below. Only Do can be the same letter. Use # or b!

Do	Re	ME	Fa	So	LE	TI	Do

Draw your scale notes in treble clef and bass clef. Remember the # or b go BEFORE the note on the staff!



2

